



Case Study - I

Scoring

Overview

- UK based Assessment and Talent Management solutions provider | Over 2,000 experts in 160 countries | Delivering over 15 million tests & assessments per year globally
- Conducts Secure English Language Test (SELT) to meet the English language requirements for UK visa applications - Test is offered through authorized test centers and is available in 122 countries around the world
- Conducts exam enabling out-of-school youth and adults in U.S. to earn state-issued high school equivalency (HSE) credential

Monthly Peak Volume Capacity

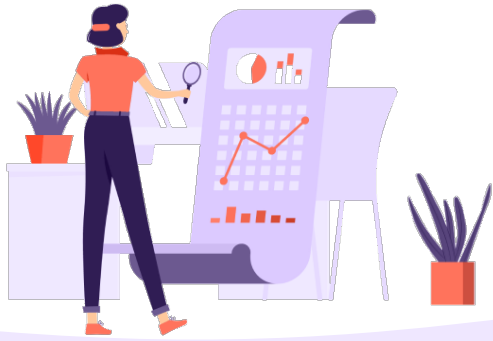
- 2021 – 500 responses
- 2022 – 4,000 responses
- 2023 – 8,000 responses

Trivium Support

- Hand-scoring Real SELT Writing and Speaking responses, based on CEFR Levels
- Hand-scoring Real HSE credential test of students appearing across various U.S. States
- SLA: 48-hour TAT

Project Highlights

- Managing the process for over 4 years now
- Analytic human scoring average 6,000 response monthly
- Consistently delivering assured IRR
- Providing exhaustive annotated feedback



Case Study - II

Scoring

Overview

- American education technology company
- Provides digital and physical textbook rentals, online tutoring, and other student services
- Over three million subscribers

Monthly Peak Volume Capacity

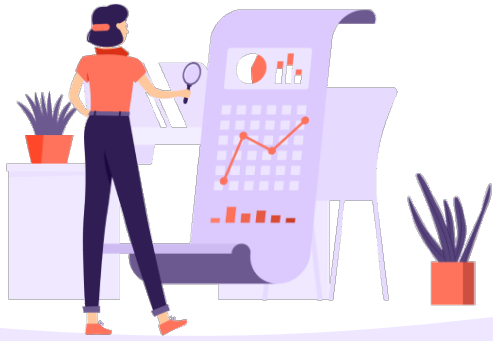
- 2020 – 12,000 responses
- 2022 – 18,000 responses
- 2023 – 31,000 responses

Trivium Support

- Analytic human-scoring average 15,000+ student responses/month
- Comprehensive actionable feedback, containing criterion-referenced data with annotated citations
- SLA: 24-hour TAT

Project Highlights

- Managing the process for over 4 years now
- Consistently delivering CSAT/Happiness Rating of 94% and higher
- Covering a broad spectrum of academic writing like essay, paragraph, cover letter, resume, email, lab report etc, using individualized rubrics



Case Study - III

Scoring

Overview

- Provides test preparation and counselling for the competitive exams, such as GRE, GMAT, TOEFL, SAT, ACT, MCAT, and IELTS
- Educates students through audio/video lessons, practice test questions, and online email support
- Over 1.5 million students have used client services to prepare for standardized exams

Scoring:

- Practice IELTS Speaking and Writing responses
- Practice TOEFL Writing responses
- Practice GRE, GMAT, SAT, and ACT responses

Trivium Support

- Providing thorough and actionable feedback on how the writing can improve in each of the rubric categories
- SLA: 24-hour TAT

Project Highlights

- Analytic human scoring average 5,000 responses monthly
- Guiding students with follow-up queries
- Annotated individualized feedback for Speaking responses too